



www.bantamcleanpower.com

Patented Technology that Protects
Line, Neutral and Ground

**Pro
Series**

Bantam Applications

Computers and Servers

Symptoms:

A data breach has occurred via no detectable means. The server contains current operating system patches and anti-virus/anti-malware software. Network access to the server is controlled and restricted via IP or MAC blacklists and white-lists. Log-ins are monitored and password strength and rotation policies are enforced. The server itself is in a cage with restricted personnel access. No explanation for how the breach has occurred exists.

Cause:

Electrical signals that both identify hardware components and contain binary data from a server are passed onto the power cord wires. These signals can be detected without touching or compromising any wires, creating an "air-gapped" exposure. These easily captured and measured electrical signals are the basis for a Power Line Exploitation (PLE) as described in NSA TEMPEST documents. The data in these signals can be used to determine the hardware vendor, machine type and credentials. These signals migrate outward from the server on the electrical supply wires, beyond the equipment rack power distribution unit and ultimately outside of the facility.

Cost:

The cost of a data breach is the value of the stolen intellectual property, trade secrets, personal data, strategic information, and sensitive intelligence.

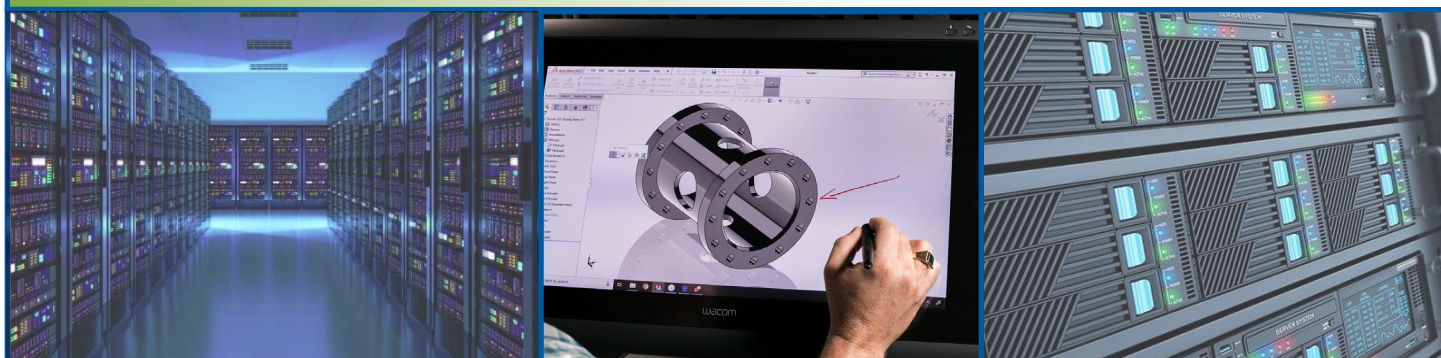
Solution:

The Bantam Technology can be included in your system, or be rack mounted as a stand alone component. It will permanently filter and remove any identifiable electrical signals - and the patterns they represent - on all electrical paths. Bantam's patented technology eliminates the PLE threat.

Savings:

The UL Component Listed SA3600A can be included by the OEM and is a cost effective and space efficient insurance to protect valuable data from PLE. In addition to eliminating the PLE threat, this product uses not power, is also an industry leading bi-directional power conditioner that filters damaging harmonics, noise, surge and transients from the power feeding your servers.

**Surge Protection ● Power Conditioning & Filter ● Stable Ground Reference
Harmonic Attenuation ● Power Factor Correction ● Hacker Protection**



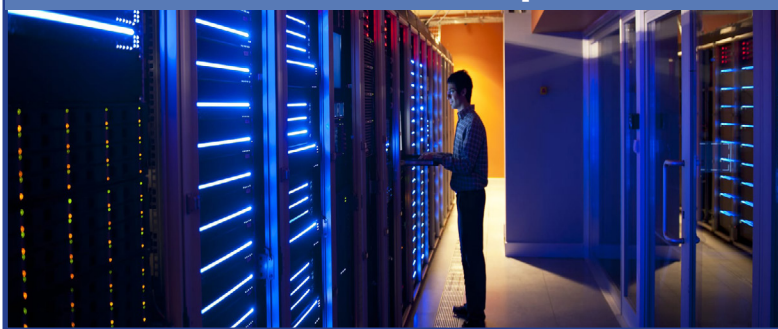
Contact: Lodestone/Digilant, 4769 E. Wesley Drive, Anaheim CA 92807 • (714)-970-0900



www.bantamcleanpower.com

**Patented Technology that Protects
Line, Neutral and Ground**

Servers and Computers



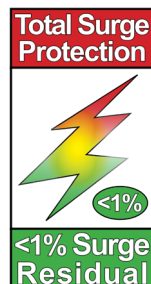
The ideal Power Conditioner for Power Pollution found in server and computer applications. Absorbs surges, spikes transients, EMI & RFI, and reduces harmonic distortion. The Patented Circuit is a Bi-Directional filter of Line, Neutral and Ground, so devices sharing a common power source do not share surges, transients, and harmonics.



Bantam Vanguard PP18004 120V 15 amps

Input Voltage: 110-120 VAC Single Phase
Output Voltage: 110-120 VAC Single Phase
4 Outlets: Four (4) filtered NEMA 5-15R outlets
Output Current: Vanguard PP18004. 15 amps
Nominal Frequency: 50 to 60 Hz
Circuit Protection: 15 amp thermal breaker, push-to-reset
Safety Standard: MET Listed to UL and cUL Standards

Portable and compact, the 15 amp Vanguard packs incredible Power Conditioning and Surge Protection Technology in a small affordable package.



Bantam Citadel RM1440 120V 15 amps

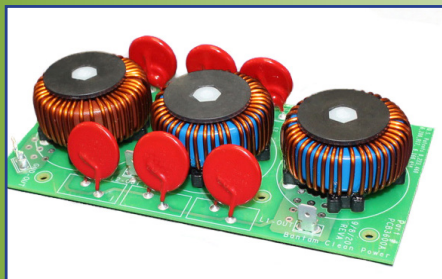
Input/Output Voltage: 110-120 VAC 60 Hz, Single Phase
8 Outlets: Six (6) filtered NEMA 5-15R outlets
 Two (2) IEC 320 C13 outlets, adapters included.
VA Rating: 1440VA 50 to 60 Hz

Bantam Citadel RM2880 220V 15 amps

Input/Output Voltage: 205-220 VAC 60 Hz, Single Phase
8 Outlets: Eight (8) filtered EIC 320 C13 outlets
VA Rating: 2880VA 50 to 60 Hz

Regulatory Compliance: UL 62368-1 for US and Canada
Circuit Protection: Thermal breaker, push-to-reset
Color LCD Display: Real Time Value For: Surge Count, Voltage, Current, Frequency, Wattage, Power Factor

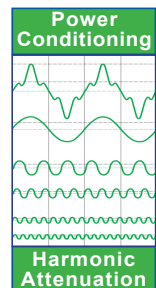
Available in 120 or 220 volts, the Versatile and Effective, 15 amp Citadel can be rack, floor or wall mounted. Essential protection for computers, test equipment, security and all vulnerable electronics.



Bantam Tempest SA3600 100-240V 15 amps

Input/Output Voltage: 100-240 VAC Single Phase
Max Wattage: 3600 50 to 60 Hz
Output Current: For US and Canada 15 amps.
Input/Output Connections: 3 each 0.25" QC Spade Connectors
Regulatory Compliance: UL 62368-1, CE

This Bantam Patented Circuit is UL Component Listed so OEMs can include superior surge and power conditioning in a wide variety of products.



**Surge Protection ● Power Conditioning & Filter ● Stable Ground Reference
 Harmonic Attenuation ● Power Factor Correction ● Ground Infiltration Protection**